



## DEVELOPMENT AND PROPERTY COMMITTEE

Tuesday, June 14, 2022 – 1:00 p.m.

County of Renfrew Administration Building

### AGENDA

1. Call to order.
2. Land Acknowledgement.
3. Roll call.
4. Disclosure of pecuniary interest and general nature thereof.
5. Adoption of minutes of previous meeting held on May 10, 2022 and the minutes of the Joint Development and Property/Community Services Committee held on May 25, 2022 (attached).
6. Delegations: None at time of mailing.
7. Development and Property Page
  - a) Department Report 3
  - b) Economic Development Division Report 6
  - c) Ottawa Valley Tourist Association Report 14
  - d) Enterprise Renfrew County Report 18
  - e) Forestry and GIS Division Report 19
  - f) Real Estate Division Report 36
  - g) Planning Services Division Report 39
8. New Business.
9. Closed Meeting: None at time of mailing.
10. Date of next meeting (Tuesday, August 9, 2022) and adjournment.

**NOTE:** a) **County Council: Wednesday, June 29, 2022.**

b) Submissions received from the public, either orally or in writing may become part of the public record.

## **Strategic Plan**

**Strategic Plan Goal # 1: To inform the Federal and Provincial government on our unique needs so that Renfrew County residents get their “fair share”.**

Initiatives:

- a) Create a strategic communications plan
- b) Identify and advocate for issues important to the County of Renfrew.

**Strategic Plan Goal # 2: Fiscal sustainability for the Corporation of the County of Renfrew and its ratepayers.**

Initiatives:

- a) Commitment from Council supporting principles within the Long-Term Financial Plan
- b) Establish Contingency Plan to respond to provincial and federal financial pressures and opportunities beyond the Long-Term Financial Plan.

**Strategic Plan Goal # 3: Find cost savings that demonstrate our leadership while still meeting community needs.**

Initiatives:

- a) Complete community needs assessment
- b) With identified partners implement plan to optimize service delivery to the benefit of our residents.

**Strategic Plan Goal # 4: Position the County of Renfrew so that residents benefit from advances in technology, to ensure that residents and staff have fair, affordable and reasonable access to technology.**

Initiatives:

- a) Ensure that the County of Renfrew is top of the list for Eastern Ontario Regional Network funding for mobile broadband
- b) Lobby for secure and consistent radio systems for first responders and government
- c) Put a County of Renfrew technology strategy in place.

## COUNTY OF RENFREW

### DEVELOPMENT AND PROPERTY DEPARTMENT REPORT

---

**TO:** Development and Property Committee  
**FROM:** Craig Kelley, Director of Development and Property  
**DATE:** June 14, 2022  
**SUBJECT:** Department Report

---

#### INFORMATION

1. **Climate Action Plan [Strategic Plan Goal No. 2]**

County of Renfrew staff have issued a Request for Proposal (RFP) twice in 2022, with proposal submission deadlines of April 14 and May 20 respectively. Unfortunately, neither of these calls resulted in a single response that could be evaluated and/or awarded. In an effort to move this action item forward, staff will consult with known climate action plan consultants to determine if new criteria needs to be established along with a change to the budget required to complete this plan. A report will be brought to Committee and Council for future consideration.

2. **Connecting the East: A Draft Transportation Plan for Eastern Ontario**

Attached as Appendix I is correspondence that was sent to the Honourable Caroline Mulroney, Minister of Transportation by Warden Debbie Robinson, Chair of the Eastern Ontario Wardens' Caucus (EOWC) requesting that the Ministry include representation from the EOWC in the consultation task force for the draft transportation plan for eastern Ontario.

3. **Economic Development Division**

Attached as Appendix II is the Economic Development Division Report, prepared by Mr. Alastair Baird, Manager of Economic Development, providing an update on activities.

4. **Ottawa Valley Tourist Association**

Attached as Appendix III is the Ottawa Valley Tourist Association Report, prepared by Mr. Alastair Baird, Manager of Economic Development, providing an update on activities.

5. **Enterprise Renfrew County**

Attached as Appendix IV is the Enterprise Renfrew County Report, prepared by Mr. Alastair Baird, Manager of Economic Development, providing an update on activities.

6. **Forestry and GIS Division**

Attached as Appendix V is the Forestry and GIS Division Report, prepared by Mr. Jason Davis, Manager of Forestry and GIS, providing an update on activities.

7. **Real Estate Division**

Attached as Appendix VI is the Real Estate Division Report, prepared by Mr. Kevin Raddatz, Manager of Real Estate, providing an update on activities.

8. **Planning Division**

Attached as Appendix VII is the Planning Division Report, prepared by Mr. Bruce Howarth, Acting Manager of Planning Services, providing an update on activities.

c/o County of Renfrew 9 International Drive, Pembroke ON, K8A 6W5

May 25, 2022

Honourable Caroline Mulroney  
Minister of Transportation  
5th Floor, 777 Bay Street  
Toronto, ON M7A 1Z8

**Re: Consultation Task Force Representation - *Connecting the East: a draft transportation plan for eastern Ontario***

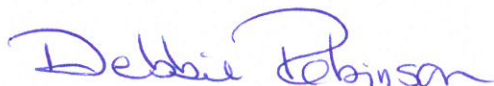
Dear Minister Mulroney:

The Eastern Ontario Wardens' Caucus (EOWC) applauds the Province for their commitment to improving transit across eastern Ontario through the [Connecting the East: a draft transportation plan for eastern Ontario](#). Transportation that fits the unique and evolving needs of rural eastern Ontario is a longstanding focus of the EOWC.

As part of the draft transportation plan, the EOWC understands that the Province plans to conduct a long-range technical study of the transportation network that will include engagement beginning in summer 2022. During the EOWC meeting on May 13, 2022, in Renfrew County, the Caucus discussed the provincial draft transportation plan and upcoming consultation. The EOWC strongly recommends that the Ministry of Transportation's consultation task force include representation from the EOWC regarding the draft transportation plan for eastern Ontario. Furthermore, the EOWC encourages the Province to include airports as part of the consultation process.

The EOWC advocates on behalf of property taxpayers covering the 13 counties and 90 local municipalities across rural eastern Ontario. The Caucus prides itself on its ability to speak with a unified voice to bring the region together. Following the Ontario election, the EOWC looks forward to hearing back from the Minister to advance consultation towards a comprehensive transportation plan that works for all of eastern Ontario.

Sincerely,



Debbie Robinson  
Chair, 2022, Eastern Ontario Wardens' Caucus

**ECONOMIC DEVELOPMENT DIVISION REPORT**

Prepared by: Alastair Baird, Manager of Economic Development

Prepared for: Development and Property Committee

June 14, 2022

---

**INFORMATION**

1. **Organization of Canadian Nuclear Industries (OCNI) and Canadian Nuclear Laboratories (CNL) Industry Day [Strategic Plan Goal No. 1]**

Business Development Officer David Wybou recruited local businesses and Alastair Baird, Manager of Economic Development participated in the OCNI/CNL Industry Day that took place at the Chalk River Laboratories on Thursday, June 2, 2022. David, Alastair and Craig Kelley, Director of Development and Property attended the CNL and OCNI information and networking dinner at the Petawawa Golf Course the evening prior. These events provided updates on activities taking place at the Chalk River Laboratories and assist to connect Economic Development Services and our local businesses to the wider CNL and nuclear sector supply chains.

2. **County of Renfrew Forestry and Value-added Wood Processing Committee Meeting [Strategic Plan Goal No. 1]**

Business Development Officer David Wybou has organized a meeting of the Forestry and Value-added Wood Processing Committee to take place at the Sands On Golden Lake the morning of Wednesday, June 15, 2022.

3. **Business Site Visits [Strategic Plan Goal No. 1]**

Business Development Officer David Wybou coordinated business site visits with provincial and federal counterparts in support of business growth and development projects ongoing or planned in local businesses. Four Renfrew County businesses located in the Towns of Deep River, Laurentian Hills and Arnprior, and the Township of Laurentian Valley were visited. This was the most recent of a series of site visits economic development services coordinates for provincial, federal and industry association representatives on an on-going basis.

**4. County Intervention to Canadian Nuclear Safety Commission (CNSC)  
[Strategic Plan Goal No. 1]**

County Councillor Peter Emon, representing Warden Debbie Robinson and County Council, submitted a verbal intervention to the CNSC Public Hearing on June 3, 2022 in support of Canadian Nuclear Laboratories' (CNL) application to amend its Chalk River Laboratories (CRL) site licence to authorize construction of a Near Surface Disposal Facility (NSDF). The CNSC Public Hearings were held in Pembroke from May 29 to June 3, 2022. The Town of Deep River also provided a verbal intervention supporting the CNL application for a site licence amendment for Chalk River Laboratories to authorize the construction of a NSDF. Attached as Appendix ED-I are the notes from Councillor Emon's verbal intervention to the CNSC.

**County of Renfrew Intervention, Friday, June 3, 2022**  
**Canadian Nuclear Safety Commission (CNSC)**  
**In Support of:**  
**Canadian Nuclear Laboratories (CNL)**  
**Application to Amend the**  
**Chalk River Laboratories (CRL) Site Licence to Authorize Construction**  
**Of a Near Surface Disposal Facility (NSDF)**

**Good Morning President Velshi and Commissioners**

**The Intervener**

I am County Councilor Peter Emon, speaking on behalf of Warden Debbie Robinson, and representing County of Renfrew Council and our seventeen municipalities with a population of 107,855. The County of Renfrew has submitted a written intervention and my presence here is to support that intervention. We represent the majority of residents living in close proximity to Chalk River Laboratories.

**Introductory Expression of Support**

We support the application by Canadian Nuclear Laboratories for a site licence amendment to authorize the construction of a Near Surface Disposal Facility. We recognize that an appropriate disposal facility is required to responsibly manage the low-level nuclear legacy materials present on the CRL site. We also understand and accept that the most efficient, safe and long-term management of low level nuclear waste materials from CRL operations is to dispose of it at the large, secure and expertly staffed Chalk River Laboratories, a site owned by the Government of Canada.

We are in agreement with CNL that the NSDF solution is the correct solution for the management of these materials. We recognize the professional, scientific, design, planning, geo-technical and engineering work undertaken by Canadian Nuclear Laboratories, overseen by Atomic Energy of Canada, Limited, that has resulted in the plan for the NSDF and the safe and secure long-term disposal of low-level nuclear wastes.



## **Why Renfrew County Council Supports the NSDF Solution**

The NSDF is essential to manage the low-level waste materials being collected from across the Chalk River Laboratories site, resulting from the site cleanup of legacy waste, and from the on-going site renewal program of removing redundant and aged buildings.

We want and expect CRL and AECL to maintain the Chalk River Laboratories and the environment safely and securely. We want the site renewal projects to proceed. We want the waste materials to be stored safely and securely and we want this to happen as soon as possible. We have heard from all quarters a desire for environmental protection, and we share that desire. That is why we desire a safe and secure disposal solution to be deployed now.

Why would we hesitate any longer?

Over 2020 and 2021, the County of Renfrew engaged MDB Insights, Metro Economics and Independent Environmental Consultants (IEC) to study the Social, Economic and Environmental Impact of Chalk River Laboratories and Canadian Nuclear Laboratories. The analysis clearly demonstrated the critical role of Chalk River Laboratories in supporting the people and economy of Renfrew County. Canadian Nuclear Laboratories employs approximately 2,700 employees at Chalk River Laboratories paying \$380 million in salaries and benefits annually. The economic impact of those salary dollars and operational expenses are the foundation of our county economy, especially in the northwestern sector, where we are meeting today.

This nuclear legacy remediation work, site renewal and development of new laboratories requires that an appropriate disposal facility be available to accommodate the nuclear waste materials resulting from this important work. This is the reason and the need for a NSDF.

It is not all about the money and financial benefits the people and businesses of Renfrew County receive from CRL operations, though that is vitally important and significant to the future and sustainability of our communities. It's about the continuation of the world-leading scientific research and development that has been carried out at CRL for 77 years. This is Canada's single largest science and technology centre. The work that has been done there, and is planned for the

future, enables Canada to address scientific and technical challenges in many aspects of life and commerce, far beyond solely nuclear.

That legacy of R&D, including two Nobel Prizes, must be built upon and continue for future generations. We are proud of that legacy, proud to host such important work here in Renfrew County. We wish it to continue, expand, and diversify.

The site renewal and NSDF project will support laboratory operations and employment for future young Canadian Science, Technology, Engineering, and Mathematics (STEM) students, continuing that unique and vital support to higher education.

The NSDF project will enable the continuation of the long heritage of the peaceful applications of nuclear science carried out here, contributing to industry, security, human health, and non-greenhouse gas emitting electricity production.

### **Why Chalk River Laboratories for the NSDF**

CRL is one of the very few large government-owned and licensed nuclear research, science, technology and development sites in Canada. While there is a private contractor managing operations at CRL, this site, the nuclear operations there and the long-term responsibility and liability resides, and always will reside, with the Government of Canada and AECL on behalf of the people of Canada.

There is no more ideal location in Canada for long-term management of this type of low-level nuclear waste than CRL. Of importance to recognize, CRL already contains the vast majority of the material that is proposed to be stored in the NSDF. Common sense and best practices would dictate, and we would prefer, to have this material remain in place rather than having it transported on our public roads and through our communities.

The government of Canada will own the CRL site in perpetuity and will hold the liability. The employees of CNL are local residents, and they are a local level of knowledge and oversight of all operations at CRL. They live, work, recreate and raise their families here. CNSC and AECL employees and boards have the responsibility to review, approve and monitor all activities at CRL.

The large CRL site and entire watershed downstream on the Ottawa River will benefit from the environmental remediation underway to collect low-level nuclear waste for permanent disposal in the secure, monitored and managed NSDF, equipped with a leachate management and processing facility. This will directly ensure much greater protection for the Ottawa River and all surface and ground water on the site. Government oversight will continue over the long-term and at every step of the process.

The NSDF concept is not new or untried. We have already learned this week about the excellent performance of the NSDF at Port Hope on Lake Ontario, just east of Toronto. Many of us travel past that NSDF, which abuts Highway 401, when we travel to the GTA

This national nuclear legacy must be properly managed and stored in a highly engineered facility for the long-term. Representing the residents of Renfrew County, many of whom are very close neighbours to CRL, and many of them employees at CRL, county councilors are quite aware of the activities at CRL. County Council has been kept well informed of the activities at CRL by CNL. Many of our members have visited the site over the years and have received delegations from senior leadership of AECL, and more recently, of Canadian Nuclear Laboratories (CNL). The regular, comprehensive and open public communications from AECL and now CNL have been informative and helpful to all members of the public across the county, and beyond.

CNL has also been a delegation to the Eastern Ontario Wardens Caucus, with the senior leadership team meeting with elected leaders from the broader region.

This project will enable us to build on the 77 years of world leading scientific R&D conducted at CRL, rather than risk losing it all. In addition, the broad range of scientific activity presently underway and proposed for the future is not just serving the nuclear industry. Canada's best and brightest in the fields of chemistry, biology, physics, radiopharmaceutical medicine and cancer therapy, metallurgy, advanced materials, mathematics, computer modelling and simulation, environmental science and many other disciplines conduct R&D at CRL supporting many institutions, universities, businesses and industrial sectors.

The new hydrogen laboratory is focused on applications of hydrogen as a clean energy source. The Small Modular Reactor research will address the increasing

demands for electricity world-wide. SMRs will contribute to the reduction of fossil fuel use in Canada's north, and at resource extraction and processing sites, and will support electrical grids and the electrification of automobiles.

Energy security, greenhouse gas emission reductions, and affordable energy are of interest of all our residents. Energy security through electricity delivery reliability and ability to withstand weather related threats is very relevant, especially in the aftermath of the storm-related damage to the electrical grid of May 21 in central and eastern Ontario. We are proud of the R&D carried out here that created the CANDU reactor technology, and the on-going support CRL provides to the power generation sector.

SMRs will play a key role in the future of smart grids and distributed power generation capability and infrastructure, helping to reduce power interruptions and reducing the need for costly investment in transmission line construction. Nuclear energy already provides over 60% of our electricity in Ontario. We see the need and the opportunity for nuclear power and Small Modular Reactors to continue to be developed and deployed. Chalk River Laboratories and our county residents working there should be and must be part of Canada's energy future.

We want Renfrew County to be part of this scientific and clean energy future. Moreover, Canada should continue to be a world-leading nation of science, technology and efficient use of resources- contributing our skills and technologies to assist other nations.

All this valuable and vitally important scientific work requires a successful site clean-up and renewal, which requires a low-level waste disposal solution. The NSDF

## **Conclusion**

The County of Renfrew has been the willing host and partner to Chalk River Laboratories for 77 years and three generations. We have benefited economically and socially from the laboratory operations and from the thousands of employees who have lived and worked here. The presence of all these employees has supported our communities, organizations, clubs, schools, health facilities and small businesses. It has made our region richer in many ways and we are proud to be the home of this world-class science and technology facility.

We have a responsibility to our residents and to all Canadians, to assume a share of responsibility for the work conducted at CRL. We assume the responsibility to host the disposal of the materials created here. We cannot in good faith hand off a waste material to another community when we have a safe and viable solution here, in situ, at CRL.

CRL is part of our county and community. A solution to the safe storage and disposal of low-level materials created on the site must be found and implemented.

The NSDF is the solution that our Canadian and global experts have developed and proposed.

The nuclear regulatory regime in Canada is recognized globally as one of the most rigorous, comprehensive and safety-focused, and we are proud of this. All Canadians rely on and trust government regulators to keep our aviation, shipping, railway and food systems safe and secure. We trust and rely on the CNSC to rationally and scientifically evaluate this application for a site license amendment to authorize the construction of a Near Surface Disposal System at CRL.

At this stage of this 7-year process, we understand that CNSC technical staff have completed their final evaluation of the NSDF project proposal and that it is acceptable and represents the best solution to the low-level waste disposal challenge at CRL. This week we have heard nothing new, or more informative or helpful that would improve upon this project design and implementation. We have heard nothing that would suggest a viable alternative

We urge the CNSC to approve the amendment and allow the construction of the NSDF to begin as soon as feasible. You just heard the Town of Deep River comment on their independent evaluation of the NSDF project, and the high level of engagement and due diligence of CNL responding to their questions and comments.

This process has been long, exhaustive and thorough, and it is time to move forward. This is a proposal to create a highly engineered disposal facility to receive low-level nuclear waste. We have low-level nuclear waste accumulated at CRL. Let's dispose of this material properly, as soon as possible, to mitigate any potential for environmental contamination.

**OTTAWA VALLEY TOURIST ASSOCIATION REPORT**

Prepared by: Alastair Baird, Manager of Economic Development

Prepared for: Development and Property Committee

June 14, 2022

---

**INFORMATION****1. International Travel Trade Familiarization Tour [Strategic Plan Goal No. 1]**

The Ottawa Valley Tourist Association (OVTA), Ontario's Highlands Tourism Organization (OHTO) and various tourism operators recently hosted the first international travel trade Familiarization (FAM) tour to the region since 2019 from May 19 to 24, 2022, welcoming tour operators from France, Mexico, Japan, United Kingdom, Netherlands, South Korea and Canada.

Supported by Destination Ontario, this tour was one of the official pre-tours of Rendez-vous Canada, Canada's largest tourism marketplace that brings together international tour operators with sellers of Canadian tourism products and destinations for one-on-one appointments and networking.

Due to the storms that ripped through Eastern Ontario while the tour was taking place, last minute changes had to be made to the itinerary due to severe damage in the Peterborough and Bon Echo areas which resulted in the group spending an extra night in the Ottawa Valley and having the opportunity to visit additional locations in the region.

Locations on the FAM tour included:

- Rafting with Madawaska Kanu Centre
- 2 nights at Spectacle Lake Lodge, including canoeing and hiking
- Tour of Barry's Bay
- Visit to the Bonnechere Caves and tour of Eganville
- Tour of Killaloe and treats at Beavertails

**2. Ottawa Valley Visitor Information Centres [Strategic Plan Goal No. 1]**

Staff have been working with municipal partners on the re-opening of Visitor Information Centres (VICs) across Renfrew County, as well as planning for the training and familiarization tour for VIC staff.

Training for staff will be conducted virtually from June 21-23 and 28-29, 2022 with the Ontario Tourism Education Council (OTEC). The familiarization tour will be held on June 27 and June 30, 2022.

Visitor Information Centres are located in eight municipalities, including:

- |                                |   |
|--------------------------------|---|
| • Arnprior                     | Arnprior and District Museum<br>Quality Inn Hotel                             |
| • Bonnechere Valley            | Eganville Visitor Information Centre  |
| • Killaloe, Hagarty & Richards | Killaloe Visitor Information Centre   |
| • Madawaska Valley             | Barry's Bay Railway Station   |
| • Pembroke                     | Best Western Pembroke Inn<br>Champlain Trail Museum<br>OVTA/County of Renfrew |
| • Petawawa                     | Civic Centre  |
| • Renfrew                      | Renfrew Chamber of Commerce<br>Renfrew Visitor Information Centre             |
| • Whitewater Region            | Cobden Visitor Information Centre   |

3. **Giant Screen Marketing in Greater Toronto Area (GTA) – OVTA and Economic Development Services Collaboration (Strategic Plan Goal No. 1)**

OVTA and Economic Development Services are collaborating on a marketing program in the GTA utilizing 18 giant video screens located at strategic sites along the major four hundred series highways running through Canada's most populated region. We will split 160,000 impressions of 8-second-long video messages, one promoting tourism and one promoting county lifestyle and career opportunities. The campaign runs from June 6 to June 19, 2022. These screens are truly giant, measuring 14' X 48' and situated prominently along Highways 401, 403, and 407.

This is a first trial of this marketing channel and, if successful, we will consider future use of these giant screens to reach the large and nearby GTA audience of tourists, investors, workforce and retirees.

Staff will utilize Google Analytics to measure any pattern changes to our tourism related inquiries and social media traffic through OVTA. Staff will also utilize Google Analytics to measure changes in our economic

development social media and communications traffic. The other aspect of measuring results will be by anecdotal evidence. Staff will tabulate and evaluate any increases in direct comment or communications received by tourism and economic staff by any persons who saw the videos, local or GTA residents.

Attached as Appendix OVTA-I are the two marketing images that are appearing on the 18 giant video screens in the GTA.





County of  
**Renfrew**  
Ontario . Canada

**Live Rural.  
Work Global.**

*Ottawa Valley*



**ENTERPRISE RENFREW COUNTY REPORT**

Prepared by: Alastair Baird, Manager of Economic Development

Prepared for: Development and Property Committee

June 14, 2022

---

**INFORMATION****1. Spring Intake Starter Company Plus [Strategic Plan Goal No. 1]**

The first intake for Starter Company Plus 2022/2023 program year has 14 participants. These new entrepreneurs will undergo three months of business training, coaching and mentoring from Enterprise Renfrew County staff, business coaching professionals, local business professionals and local volunteer entrepreneurs. At the end of the training sessions, those clients who wish to continue may compete in our business plan pitch contest where they may be awarded up to \$4,000 funding to utilize towards their business operations.

**2. Summer Company [Strategic Plan Goal No. 1]**

Summer Company recruitment has yielded five applicants and staff is reviewing and updating the business plans from these student entrepreneurs. Once the reviews are complete, the business plans will be evaluated and successful young entrepreneurs will join our 2022 Summer Company program.

**3. Entrepreneurship Mentors [Strategic Plan Goal No. 3]**

Enterprise Renfrew County is seeking volunteer mentors, coaches and advisors to assist our Starter Company Plus program and our Summer Company student entrepreneur development program. Volunteers with experience in entrepreneurship, business operations and management, and professionals who service business clients, and those with experience in marketing, sales, communications, management, media, e-marketing and logistics are invited to contact Jackie Stott, Economic Development and Entrepreneurship Coordinator or Heather Inwood-Montrose, Small Business Advisor.

## FORESTRY AND GIS DIVISION REPORT

Prepared by: Jason Davis, Manager of Forestry and GIS

Prepared for: Development and Property Committee

June 14, 2022

### INFORMATION

#### 1. Forestry Activities [Strategic Plan Goal No. 3]

a) Below is the Forestry Activity Tracker summary for the months of January to May 2022:

Summary	County Forester Hours	County Forester %	Forestry and Trails Tech. Hours	Forestry and Trails Tech. %
Management of County Forests	520	83	15	2
Industry Support	0	0	0	0
Species at Risk	0	0	0	0
Trails	0	0	640	91
GIS	N/A	N/A	0	0
Municipal Support	0	0	0	0
Education & Public/Forest Health	21	3	0	0
Meeting/Conference/Workshop	83	14	42	6
Admin/Other	0	0	3	1
<b>Total</b>	<b>624</b>	<b>100</b>	<b>700</b>	<b>100</b>

b) There have been multiple public inquiries about browning cedar trees in the County. This is caused by a native insect called cedar leafminer. Cedar leafminer has not been known to cause widespread death of cedar trees, but the insect “mines” out the inside of cedar leaves, starting at the branch tips and moving inwards, causing the trees to look quite brown in the spring. Most trees are still green closer to the bole and are able to regrow new leaves. More information is available here: [Cedar Leafminer Fact Sheet \(lrconline.com\)](http://www.lrconline.com/Cedar-Leafminer-Fact-Sheet). Defoliation is particularly visible along Highway 41 from Pembroke to Dacre, and towards Renfrew.

- c) Spongy Moth egg hatch has taken place and defoliation will start to become visible in the coming weeks as the caterpillars grow, if the infestation will be significant this year. Informal observations in some County Forests were that many eggs did not hatch. In other forest health news, staff pulled invasive garlic mustard from a sensitive area of one of the Renfrew County Forest (RCF) Tracts for the third year in a row.
- d) The May 21, 2022 windstorm impacted some tracts of the RCF. Staff are still mapping and evaluating damage in 10 potentially affected tracts, which is a time-consuming activity on the ground. It is likely that salvage operations will be necessary. There is only a window of two months to salvage pine once it is on the ground, or it stains and is no longer merchantable. Destructive wind events are becoming a near-annual event, and monitoring for this type of damage is difficult with the current capacity of the Division. Staff are investigating the purchase of a drone for mapping and monitoring purposes. Staff have been communicating with other land managers and colleagues in the County to gather as much information as possible, and have requested any available information about damage location or mapping resources from paramedic services.

The 2017-2026 Forest Management Plan does encourage salvage, as indicated in the excerpts below:

“Section 3.5.8, point 6: Salvage merchantable timber where possible. In the event of unexpected natural events, such as wind, fire or drought, efforts will be made to make use of merchantable material. Artificial regeneration efforts will be considered, where appropriate. An amendment to the Forest Management Plan will not be required.

Section 5.3.1.2: Salvage operations, such as recovering wind-thrown, burned, flooded, diseased or insect-damaged timber may be made at the discretion of County staff without a public tender process.”

- e) The County Forester attended the World Forestry Congress in Seoul, South Korea from May 2-6, 2022 and delivered a presentation during

the session "[The Future is Now: Investing in Young Forestry Professionals and Career Development](#)".

In January 2021 County Council approved the appointment of the County Forester to the Inaugural Board of the Global Network for Young Professionals in Forestry.

## **2. GIS [Strategic Plan Goal No. 3]**

- a) Attached as Appendix FORGIS-I is the GIS Activity summary for the months of January to May 2022. GIS staff worked on a total of 452 GIS projects.
- b) On May 26, 2022 staff held a virtual 911/Civic Addressing meeting for the local municipalities, including the City of Pembroke and the Algonquins of Pikwakanagan. Items discussed were as follows: the history of 911 in the County, County and Municipal roles and responsibilities, road naming guidelines, remote and water access only properties, Next Generation 911, new online forms, civic addressing procedures, how to calculate a new civic address, assigning addresses in a subdivision, and cul-de-sac addressing. Attached as Appendix FORGIS-II is the presentation that was delivered at the meeting.

## **RESOLUTIONS**

### **3. DP Trails–2022-01 – Quarry Limestone Crusher Dust Supply and Delivery to K & P Recreational Trail [Strategic Plan Goal No. 2]**

**Recommendation:** THAT the Development and Property Committee approve the award of the tender submitted by Goldie Mohr, Ottawa, Ontario in the amount of \$102,654.87 plus HST for the brushing, ditching, supply and deliver of aggregate on the K & P Recreational Trail from Murphy Road to Pucker Street (Greater Madawaska), a distance of approximately 4.9 km.

#### **Background**

Tenders were requested and received for the trail rehabilitation on the K & P Recreational Trail from Murphy Road to Pucker Street (Greater Madawaska), a distance of approximately 4.9 km in the Township of Greater Madawaska as follows:

1. Goldie Mohr, Ottawa ON	\$102,654.87
2. McCrea Excavating, Pembroke ON	\$189,995.00
3. G.P. Splinter Forest Products and Construction, Pembroke ON	\$189,615.00
All amounts exclude HST	

Procurement of this tender has followed the requirements set out in Corporate Policy GA-01 – Procurement of Goods and Services and staff confirm that there are sufficient funds in the 2022 budget to complete the project. This project area (two sections) is part of the County’s successful Rural Economic Development (RED) and the Ontario Trillium Foundation grant applications.

The K & P Recreational Management Advisory Committee reviewed the results on May 20, 2022 and support the project.

4. **Small Local Government Enterprise License Agreement (SG-EA) Esri  
[Strategic Plan Goal No. 4]**

**Recommendation:** THAT the Development and Property Committee approve that the County of Renfrew enter into a three year contract with Esri for the Small Local Government Enterprise License Agreement; AND FURTHER THAT the three year costs be taken from the Municipal Modernization Program (Intake 2 and Intake 3) and County funds as allocated at the May 25, 2022 Council meeting on the projects identified by the Perry Group Consulting Ltd. and recommended by the Senior Leadership Team; AND FURTHER THAT staff inform the local municipalities of this direction; AND FURTHER THAT staff request confirmation from the local municipalities that they are willing to enter into an Agreement with Esri to participate in the Small Local Government Enterprise License Agreement under the County of Renfrew’s umbrella license.

**Background**

Since 1998, the County of Renfrew GIS Division has provided support to all departments, municipalities and the public with mapping/GIS mapping products and data analysis. GIS staff maintains all the corporate GIS data (property parcels, road centerline, etc.) and ensures that provincial, federal and agency datasets are current. In 2002, the County transitioned to using Esri mapping software with single use licenses as a model for staff use.



Currently, the County of Renfrew has 15 Esri licenses along with 110 online users for the corporate GIS Mapping site with an annual cost of \$39,420 (including approximately \$800 in Esri credits). Six local municipalities and the Algonquins of Pikwakanagan also have individual Esri licenses with an annual cost of \$13,865. Total annual Esri costs (not including the costs for VertiGIS hosting of the County's GIS web application) for the County of Renfrew and local municipalities is \$53,285.

The SG-EA will provide unlimited access to the entire Esri Mapping products for County and local municipal staff for a fee of \$67,600 in 2022, \$68,990 in 2023 and \$70,410 in 2024. Currently, the County and local municipalities (plus the Algonquins of Pikwakanagan) spend over \$53,285 annually for only 27 individual Esri licenses and 137 online licenses.

#### Benefits of SG-EA

- Ability to expand and capitalize the County's GIS investments
- Lower software cost per unit
- Current maintenance
- Remove uncertainty over access to software and fluctuating budgets
- Ensure access to current software, support, training and consulting
- Architectural flexibility
- Predictable spend/budgeting
- Discount on other Esri software **if** required (non-royalty bearing royalty bearing offerings)
- Minimize time-consuming and restrictive procurements
- Reduce administrative costs

#### Costing Model



**Esri's Small Local Government Enterprise License Agreement (SG-EA)**

Pricing summary - SG-EA - Tier3 - 50,001 to 100,000 population

- Annual fee based on population at start of 3yr contract/commitment
- 2022 - \$67,600 + 2023 - \$68,990 + 2024 - \$70,410 = \$207,000 - 3yr total commitment
  - Minus a credit for current remaining support (pro-rated)
  - Invoiced yearly
- 3 documents provided by Esri Canada for signature:
  - SG-EA Contract Letter
  - SG-EA Terms and Conditions
  - SG-EA Quote for 1<sup>st</sup> year
- IF the population increase beyond 100K in the 3yr term then at renewal the agreement would be bumped up to Tier 4 - 100,101 to 150,000 population. The cost would increase in 2025 to \$104,500 (2026 and 2027 pricing is not yet available but would be stepped up each year).

On May 25, 2022 County Council approved the use of funding received from the Municipal Modernization Program (Intake 2 and Intake 3) on the projects identified by the Perry Group Consulting Ltd. and recommended by the Senior Leadership Team for staff to make every effort possible to utilize this funding by the Provincial Program deadlines of September 30, 2022 and February 28, 2023 and to utilize the Provision for Unallocated Funds account budget for our 35% share of the total project cost. GIS Services was selected by the Senior Leadership Team as one of the Information Technology projects to be implemented.

Therefore, it is the recommendation of our Senior Leadership Team that the following IT projects be applied against the Municipal Modernization Program funds received:

Project Name	MMP Intake #2 Category	MMP Intake #3 Category	County	Total Cost
Cost Share %	65%	65%	35%	100%
VOIP Phone System	48,750		26,250	75,000
Land and Property Management (e-Permit)	195,000		105,000	300,000
HRIS, Scheduling, Payroll Enhancements		162,500	87,500	250,000
Hardware - Servers / SAN / Wireless / Firewalls	65,000		35,000	100,000
<del>Hardware - Servers / SAN / Wireless / Firewalls</del>	<del></del>	<del>32,500</del>	<del>17,500</del>	<del>50,000</del>
GIS Services		130,000	70,000	200,000
<b>Totals</b>	<b>308,750</b>	<b>325,000</b>	<b>341,250</b>	<b>975,000</b>
Maximum Subsidy Available	312,000	317,491		

## 2025 Budget

Staff will review the GIS budget implications during the County of Renfrew's 2025 budget cycle with municipal consultation.





DEVELOPMENT AND  
PROPERTY DEPARTMENT

# GIS ACTIVITY TRACKER SUMMARY

**TIME PERIOD - January to May 2022**

	Arnprior	Deep River	Laurentian Hills	Petawawa	Renfrew	Admaston / Bromley	Bonnechere Valley	Brudenell Lyndoch & Raglan	Greater Madawaska	Head, Clara & Maria	Horton	Killaloe, Hagarty & Richards	Laurentian Valley	Madawaska Valley	McNab / Braeside	North Algonia Wilberforce	Whitewater Region	County-wide / Pembroke	TOTAL
<b>GIS Data &amp; Systems</b>																			
Database Maintenance	1	0	0	0	1	2	3	0	2	2	0	0	1	4	0	3	3	13	35
Internet GIS Maintenance	0	0	0	0	0	0	0	0	0	0	0	0	0	0	0	0	0	9	9
Internet GIS Enhancements	0	0	0	0	0	0	0	0	0	0	0	0	0	0	0	0	1	0	1
Internet Web Mapping Support	3	0	0	3	0	1	3	0	3	0	0	1	2	2	1	0	0	10	29
Metadata Creation & updates	1	0	0	3	0	1	3	0	3	0	0	1	1	2	1	0	0	9	25
Data Distribution/ Contracts	0	1	0	0	0	0	1	0	2	0	0	0	0	0	0	2	2	1	9
Conferences, Courses & User Groups	0	0	0	0	0	0	0	0	0	0	0	0	0	0	0	0	0	14	14
Training, Reports & Presentations Delivered	0	0	0	0	0	0	0	0	0	0	0	0	0	0	0	0	0	1	1
Technical Support	0	0	0	0	0	0	0	0	0	0	0	0	0	0	0	0	0	0	0
Map document conversions & updates	0	0	0	0	0	0	0	0	0	0	0	0	0	0	0	0	0	0	0
Policies & Procedures	0	0	0	0	0	0	0	0	0	0	0	0	0	0	0	0	0	0	0
Research, Funding Applications & Budgets	0	0	0	0	0	0	0	0	0	0	0	0	0	0	0	0	0	0	0
Other	0	0	0	0	0	0	0	0	0	0	0	0	0	0	0	0	0	21	21
RFP	0	0	0	0	0	0	0	0	0	0	0	0	0	0	0	0	0	0	0
<b>Internal D&amp;P Dept</b>																			
Economic Development & Tourism	0	0	0	0	0	0	0	0	0	0	0	0	0	0	0	0	0	2	2
Forestry & Trails	0	0	0	0	0	0	0	0	0	0	0	0	0	0	0	0	0	15	15
Planning	4	0	0	7	0	2	11	0	0	1	0	4	2	3	3	4	2	39	82
Real Property	0	0	0	0	0	0	0	0	0	0	0	0	0	0	0	0	0	1	1
Other	0	0	0	0	0	0	0	0	0	0	0	0	0	0	0	0	0	4	4
<b>County Departments</b>																			
Administration, Finance & Information Technology	0	0	0	0	0	0	0	0	0	0	0	0	0	0	0	0	0	1	1
Community & Social Services	0	0	0	0	0	0	0	0	0	0	0	0	0	0	0	0	0	6	6
Emergency Services	0	0	0	0	0	0	0	0	0	0	0	0	0	0	0	0	0	1	1
Human Resources	0	0	0	0	0	0	0	0	0	0	0	0	0	0	0	0	0	0	0
Public Works & Engineering	0	0	0	0	0	0	0	0	0	0	0	0	0	0	0	0	0	10	10
Other	0	0	0	0	0	0	0	0	0	0	0	0	0	0	0	0	0	0	0
<b>External Inquiries &amp; Requests</b>																			
Municipal Inquiries	8	1	0	2	1	1	3	0	5	3	1	3	0	5	4	5	9	1	52
Agencies & Institutions	0	0	0	0	0	0	0	0	0	0	0	0	0	0	0	1	0	4	5
General Public & Businesses	1	0	0	1	0	1	0	0	0	0	1	0	1	0	0	0	0	18	23
Other	0	0	0	0	0	0	0	0	0	0	0	0	0	0	0	0	0	1	1
<b>Special Projects</b>																			
911/Civic Addressing	3	2	0	4	6	2	6	3	4	3	8	1	1	7	4	3	15	33	105
	0	0	0	0	0	0	0	0	0	0	0	0	0	0	0	0	0	0	0
	0	0	0	0	0	0	0	0	0	0	0	0	0	0	0	0	0	0	0
	0	0	0	0	0	0	0	0	0	0	0	0	0	0	0	0	0	0	0
<b>Total</b>	<b>21</b>	<b>4</b>	<b>0</b>	<b>20</b>	<b>8</b>	<b>10</b>	<b>30</b>	<b>3</b>	<b>19</b>	<b>9</b>	<b>10</b>	<b>10</b>	<b>8</b>	<b>23</b>	<b>13</b>	<b>18</b>	<b>32</b>	<b>214</b>	<b>452</b>



1

## History of Civic Addressing

### Prior to 911 System

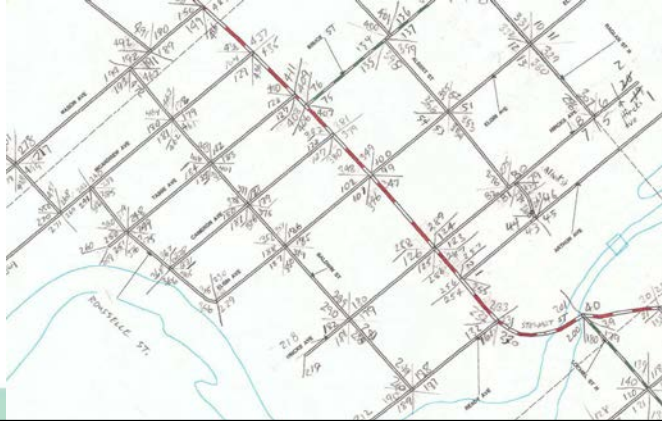
- Road names and addresses inconsistency
- Duplicate road names
- Some roads without names
- Civic addresses missing
- 1994 International Plowing Match provided \$500,000 for 911 System

2

# History of Civic Addressing

## Post 911 System

- All roads (public & private) named and mapped (GPS'd)
- Duplicate road names reduced
- All properties with habitable buildings addressed



3

## County Roles & Responsibilities

- Data collection of new or modified roads using GPS
- Creation and distribution of maps & documentation for new/modified roads to 911 Agency partners
  - Ministry of Health, Bell/911, Central Ambulance Communications Centre, Ontario Provincial Police, Canada Post, School Boards Bus Transportation, NRTCO
- Road Naming Approval
- Maintenance of the Civic Addressing Database (Road Registry Table and Civic Addressing Tables)
- Update address block ranges, GIS road layer & maps
  - \*Next Gen911 – Civic Addressing Points - updating the data provider (Bell) with new addresses (\*\* the goal is within 72 hours of a new address being issued)
- Production of property identification number (PIN) signs and road intersection signs
- Answer questions concerning Civic Addressing and road name inquiries (public, municipalities and outside agencies)



4

## Municipal Roles & Responsibilities

- Calculation of new civic addresses and installation of PIN signs for all new developments
- Local municipalities review with County staff all proposed road name changes and new roads
- Approval/adoption of road names by municipal By-law



5

## Civic Addressing Procedures – Road Naming Guidelines

- The Municipality submits the new road name to the County for review to ensure:
  - the road name does not already exist in the County
  - the name is not overly difficult to pronounce
  - the name does not sound the same as another road in the County
- The County checks the submitted new road name against roads in its Civic Addressing Database
- The Municipality will receive a confirmation email that the road is accepted or not accepted
- If the road is not accepted the municipality will submit an alternate road name for review
- Once the road name has been accepted by both the County and the Municipality, the new road name will be entered in the Pending Road Name Registry
- The new road name will be entered into the County's Road Name Registry once the road has been built and the municipality has passed their By-law for the new road. The municipality will forward all Road Naming By-laws to the County once they have been passed
- The County will forward the new road name and its block range to the Civic Addressing distribution list via email



6

## Civic Addressing Procedures – Road Naming Guidelines

Conventions to follow when assigning new names or renaming a road (from Bell911 documentation)

- Names that duplicate existing road names, or are phonetically similar, or are easily confused with any road name used or reserved for use shall not be permitted
- The use of apostrophes (') and hyphens (-,\_) shall be avoided
- The use of symbols (e.g. !@#\$%^&\*) shall be avoided
- Names that attempt to differentiate by use of differing suffixes shall not be permitted (e.g. First Street, First Avenue)



7

## How to Calculate a Civic Address

### Address Ranges for New Roads

- Measure the length of the Road
- In this example length is 733 m
- To calculate the address range of the new road you would use the following calculation:

• <b>Measurement of the road in metres</b>	=	<b>733</b>
• <b>Drop the last digit</b>	=	<b>73</b>
• <b>Multiple that number by 2</b>	=	<b>(73x2) = 146</b>
- The address range for the new road is 1 to 146



8

# How to Calculate a Civic Address

## How to Calculate and Assign an Address on a New Road (Rural Example)

- Measure from the beginning of the new road intersection to the driveway (this example 88 m to first house)



**Measurement of the road in metres** = 88  
**Drop the last digit** = 8  
**Multiply that number by 2** =  $(8 \times 2) = 16$

Since the house is on the left hand side of the road it will need to have an odd number. To get an odd number subtract 1 from the results

$$16 - 1 = 15$$

The civic address for the first house is **15**

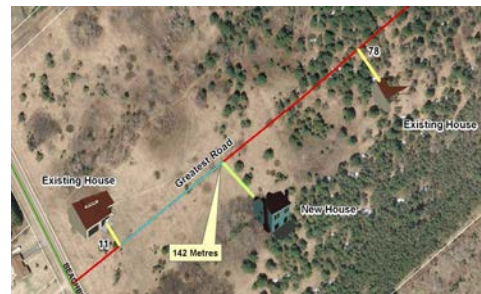


9

# How to Calculate a Civic Address

## How to Calculate a Civic Address Using a Known Civic Address (PIN)

Measures from the last know PIN (in this example PIN 11) to the new driveway



**Measurement of distance in metres** = 142  
**Drop the last digit** = 14  
**Multiply that number by 2** = 28  
**Add to the existing house number** =  $11 + 28 = 39$

The house is on the right hand side which requires it to have an even number. Add a 1 to the result to get an even numbered address  $39 + 1 = 40$

The address for the new house is **40**.



10



## Subdivisions & Urban Areas

- Urban areas and Subdivisions in urban areas do not follow the measurement method for assigning addresses
- Addresses are assigned in a sequential order i.e. 2, 4, 6, 8
- When assigning addresses in subdivisions it is important to keep in mind the following:
  - Keep room between addressing for possible plan changes i.e. single lots change to duplexes
  - Addressing should match across the street
- Addressing Plans should be submitted for review at the time of subdivision approval



11

## Numbering Cul-de-sacs

New cul-de-sacs are to be numbered with even numbers on the right and odd numbers on the left beginning at the intersection. The midpoint of the bulb is used to define the split between odd and even numbers



12

## Remote Property Addressing

- Remote Properties are properties that are not easily accessible due to their distance from main roads, their location along unmaintained or impassable roads, such as logging roads and trails
- Properties located on unmaintained roads/trails that are impassable or have limited access should not have that road/trail named or be assigned a civic address range
- They will be assigned a civic address to the nearest civic addressed road where the road intersects the civic addressed road
- Ensure to give detailed instructions on how to access the location
- Meet the EMS vehicle at the PIN location
- Bring the injured person to location where an EMS vehicle will be able to reach them.



13

## Addressing on Islands & Lakes

- On larger islands where local roads exist, civic addresses can be assigned in the normal manner.
- If the island has no roads the same rules for remote properties can be applied. A civic address can be assigned to the dock/boat launch typically used to access the island.

Or

- A virtual water access only road layer will be created and addressing will be assigned along this virtual road layer
- Addressing will start at a high number i.e. 5000
- Odd numbers along the shoreline
- Even numbers for islands

**\*\* It is important to inform these property owners that by having a civic address it does not guarantee emergency response to their property**



14



## PIN Sign Replacement Reminder

A reminder should be sent out to all residents and businesses to ensure that their PIN signs are in good standing

- That both sides of their civic address blade are visible from the roadway at all times
- Signs are clear of debris such as trees, bushes and snow
- Ensure signs still have reflectivity



15

## Next Generation 911

### • What is Next Generation 911

- NG9-1-1 is the transition of 9-1-1 from analogue systems (Land Line) to IP-based systems (Cell Phones)
- New system allows voice, data, photos, videos and text messages to be sent to 911
- NG9-1-1 will rely on authoritative GIS data and services to enable geospatial call routing, thereby helping to reduce emergency response times and save more lives and property



16

# Next Generation 911 & GIS

## Data Requirements:

1. **Road Network** - road centrelines with accurate and complete street names, address ranges, and jurisdictional boundaries
  - The County has this data in place, and is continually updating this dataset.
2. **Address Points** – site structure address points that represent the physical location of homes, apartments, businesses. These points can also show driveway entrances and parcel locations. The data must include accurate and complete address numbers, street names, and jurisdictional boundary names. The latitude/longitude of the structure will determine the proper emergency response
  - The County is working on creating address points. These Municipalities have points created: Admaston/Bromley, Arnprior, Brudenell Lyndoch Raglan, Bonnechere Valley, Greater Madawaska, Horton, McNab/Braeside, North Algona Wilberforce, and Whitewater Region (Madawaska Valley currently in Progress)
3. **PSAP Boundaries** (Emergency Response Boundaries – polygon boundaries that define the primary emergency response agency for that area.



17

## Civic Addressing GeoForm

- Some of you are using the GeoForm to plot new PIN locations to help keep the Civic Address Point Layer up-to-date

The screenshot shows the "Civic Addressing - New PINs Form" interface. It is divided into three main sections: 1. Enter Information, 2. Select Location, and 3. Complete Form. Section 1 includes fields for "New PIN (civic address)", "New civic address PIN location", "Road Name", "Road Street", "Road Type", "Municipality", and a "Choose from Drop Down" menu. Section 2, "Select Location", shows a map with a red location pin and a text box indicating that the address will appear there. Section 3, "Complete Form", has a "Submit Entry" button and a "View Submissions" link.

<https://cofr.maas.arcgis.com/apps/GeoForm/index.html?appid=cdf4f127d3a4a5ca3caa1600ff1fd4>



18

## Future Sign Order Forms Digital Forms

- New Sign Orders forms created using the Survey123 Application
- Forms can be completed on any mobile device or back in the office on a computer
- Forms can also be used Offline and uploaded later when you have cell service or data

PIN Form Example - <https://arcg.is/rquWm>

Intersection Road Form Example - <https://arcg.is/1uqHbC>



19

# Thank You

Any Questions?



20

## **REAL ESTATE DIVISION REPORT**

Prepared by: Kevin Raddatz, Manager of Real Estate  
Prepared for: Development and Property Committee  
June 14, 2022

---

### **INFORMATION**

1. **Real Estate – 2022 Capital and Capital Under Threshold Projects [Strategic Plan Goal No. 2]**

Attached as Appendix RE-I is a summary report of capital and capital under threshold projects approved in the 2022 budget.

### **RESOLUTIONS**

2. **Emergency Structural Repairs – 63 Russell Street, Arnprior [Strategic Plan Goal No. 2]**

**Recommendation:** THAT the Development and Property Committee recommend that County Council approve the emergency structural repairs as specified by NMR-Engineering at 63 Russell Street, Arnprior, Ontario in the amount of \$210,300; AND FURTHER THAT the costs to complete these emergency structural repairs be funded from the Building Reserve Fund; AND FURTHER THAT the Renfrew County Housing Corporation and the Community Services Committee be so informed of this decision.

#### **Background**

The County of Renfrew contacted NMR-Engineering to undertake an emergency structural inspection and condition assessment for localized deficiencies of roof balconies at 63 Russell Street, Arnprior, Ontario.

On April 14, 2022 a site visit and visual inspection was conducted of the defected balconies by a professional engineer and the initial finding was an actual visible balcony deflection. The structural engineer recommended emergency shoring and safety mitigation measures (including restricted access to balconies) to be undertaken before a further detailed inspection.

On April 20, 2022 a subsequent site visit was conducted along with the contractor Demers Masonry, to remove the gravel, insulation and waterproofing of the balcony joint with roof slab. By accessing the top deck concrete, a wide crack on the top roof cantilever was observed. The Crack Depth Measuring machine indicated a 91mm to 104mm deep crack. NMR-Engineering recommended applying the same precautions to all the other roof balconies due to the same nature and age of construction. The Contractor responded immediately and implemented all safety precautions as per the structural engineer's recommendation. The structural engineer has since provided a detailed structural report that defines the mitigation measures. As of June 8, 2022, each balcony is temporarily supported by shoring from the ground to the cantilevered roof. The tenants do not have access to their balconies, and the grounds in the immediate vicinity are isolated by construction fencing.

### **Financial Implications**

The estimated cost to finish the repairs as per the structural engineer report is approximately \$150,000. The quote received from Demers Masonry of \$150,900 is a fair market. A breakdown of the estimate as per invoices and quotations is as follows:

#### **NMR Engineering:**

Emergency response (completed to date) .....	\$6,400
Estimated cost for inspection on remaining work.....	\$6,400
<b>Total Engineering Services.....</b>	<b>\$12,800</b>

#### **Demers Masonry:**

Emergency response (completed to date) .....	\$46,600
Estimated cost to complete the work .....	\$150,900
<b>Total Construction Costs .....</b>	<b>\$197,500</b>

**Total Cost for the Emergency Structural Repairs .....\$210,300.00**

\*All amounts exclude applicable taxes

The cost of this emergency work is not covered under any budget. Due to the immediate response by the structural engineer and contractor and the urgent attention to complete the permanent repairs as quickly as possible, staff is seeking \$210,300 from the Building Reserve Fund.

## Real Estate - 2022 Capital Projects

Location	Work Description	Status			Comments
		Budget	Quote	Status	
County Admin Building	Soffit/wood siding	\$150,000		RFP	Closing - June 16, 2022
	Envelope repairs/repointing	\$60,000	\$99,400	Awarded	Anticipate July start date
	Storage container	\$20,000	\$14,600	In Review	Scheduled for July
	Security System & Cameras	\$40,000	\$25,740	In Progress	Currently at 95% - anticipate 100 % complete end of June
	Barrier free doors (EFA grant)	\$59,385		In Review	Scope of work to be determined
Renfrew County Place	Sealant/chaulking - exterior windows	\$45,000	\$75,788	Awarded	Anticipate July start date
	HVAC replacement/upgrade	\$150,000		In Review	Scope of work TBD
	Paramedic parking shelter	\$200,000		In Review	Scope of work TBD
	Parking Lot - Paving	\$50,000		In Review	Scope of work TBD
	Flooring/tiles	\$45,000			Review in Q3,
80 McGonigal					
Paramedic Bases	Barry's Bay - Asphalt /crack sealing	\$15,000			Scheduled for Q3,
	Petawawa - Asphalt/concrete curbs	\$20,000			Scheduled for Q3,
OPP	Line Painting	\$10,000			Scheduled for Q3,

**PLANNING DIVISION REPORT**

Prepared by: Bruce Howarth, MCIP, RPP, Acting Manager of Planning Services

Prepared for: Development and Property Committee

June 14, 2022

---

**INFORMATION****1. Staffing Update**

We are pleased to announce that Alex Benzie is the successful applicant for the newly created County Planner position. Alex first started with the County in May 2021 as a planning intern and since February was working as a Junior Planner. The now vacant Junior Planner position was advertised and closed on June 9, 2022.

**2. Bennett Meadows Subdivision and Whitewater Official Plan Amendment**

The County has received a letter of concern from the Ministry of Transportation related to the Official Plan Amendment to the County Official Plan submitted by the Township of Whitewater Region, and the Plan of Subdivision application submitted by Bonnechere Excavating Incorporated (BEI) that proposes to create 50 residential units. The concerns are related to future access to the highway and will require further consideration by the Township and BEI. The concerns and some options to move forward will be addressed in a staff report to the Township for the scheduled June 22, 2022 public meeting.

**3. Planning Division Activity Tracker [Strategic Plan Goal No. 2]**

Attached as Appendix PLAN-I is a summary of the Planning Activities for January to May 2022.

During this period, the Planning Division opened 112 new severance applications and finalized approval of 65 applications. In 2021, the County received a total of 200 applications and approvals for 117 applications.

The County has received 21 zoning by-law amendment applications on behalf of local municipalities, which is on pace with the 42 applications received last year. The County has prepared and is working with three

municipalities on new comprehensive zoning by-laws. In addition, the County is working on preparing zoning amendments for local municipalities to update by-laws to allow secondary dwellings so that property owners across the County will be in a position to participate in the Secondary Suite Program.

To date, the County has draft approved one subdivision, and provided final approval to three subdivisions. While the County has not received any subdivision applications to date, the County has responded to many general inquiries and several future subdivision applications are undergoing “advance peer review” ahead of submission. The spring is usually the time when the fieldwork is completed, keeping consultants busy and out of the office. Over the summer/fall, reports are completed, and staff anticipate the submission of applications by late fall/early winter.

There have been two appeals to the Ontario Land Tribunal this year: one related to a local Official Plan Amendment in the Town of Arnprior, and the other a right-of-way application in the Township of Greater Madawaska (hearing date June 15, 2022).

Before the COVID-19 pandemic, the County on average would process between 150-175 general inquiries. In 2021 that number increased to 254, and to date we have received 114 in 2022. We have provided 102 responses this year and there are 62 requests for pre-consultation outstanding.

## **RESOLUTIONS**

### **4. Bill 109 “Ontario’s More Homes for Everyone Act, 2022” Working Group [Strategic Plan Goal No. 3]**

**Recommendation:** THAT the Development and Property Committee direct County Planning Division staff to reach out to the 12 local municipalities to form a working group with the objective to draft and prepare an Official Plan Amendment for the implementation of Bill 109 “Ontario’s More Homes for Everyone Act, 2022”.

#### **Background**

An amendment to the County of Renfrew Official Plan will be required for the implementation of the newly legislated Bill 109. The amendment will



need to update the Official Plan regarding complete application requirements for Site Plans, Plans of Subdivision, and applications to amend Official Plans and Zoning By-laws. It is recommended that the County coordinate a working group composed of County Planning Division staff and volunteers from some of the 12 local municipalities that utilize the County Official Plan. The Official Plan amendment is required to be in place by January 1, 2023.



## DEVELOPMENT AND PROPERTY DEPARTMENT PLANNING

### DIVISION ACTIVITY TRACKER

#### TIME PERIOD - January - May 25, 2022

	Arnprior	Deep River	Laurentian Hills	Petawawa	Renfrew	Admaston/Bromley	Bonnechere Valley	Brudenell, Lyndoch & Raglan	Greater Madawaska	Head, Clara & Maria	Horton	Killaloe, Hagarty & Richards	Laurentian Valley	Madawaska Valley	McNab/Braeside	North Algona/Wilberforce	Whitewater Region	County Wide	TOTAL	2021 YEAR-END TOTAL
<b>APPROVALS</b>																				
County Official Plan Amd.	0	0	0	0	0	0	0	0	0	0	0	0	0	0	0	0	0	0	0	2
Local Official Plan Amd.	2	0	0	1	1	0	0	0	0	0	0	0	1	0	0	0	0	0	5	4
Subdivision Draft Approval	0	0	0	1	0	0	0	0	0	0	0	0	0	0	0	0	0	0	1	3
No. of Draft Approved Lots	0	0	0	23	0	0	0	0	0	0	0	0	0	0	0	0	0	0	23	97
Subdivision Final Approval	0	0	0	1	0	0	0	0	0	0	0	0	0	1	1	0	0	0	3	5
No. of Final Approved Lots	0	0	0	14	0	0	0	0	0	0	0	0	0	0	10	0	0	0	24	495
Part Lot Control By-laws	4	0	0	2	2	0	0	0	0	0	0	0	0	0	0	0	0	0	8	22
No. of Part Lot Control Units	37	0	0	6	12	0	0	0	0	0	0	0	0	0	0	0	0	0	55	275
Severances	0	0	0	5	0	7	8	6	15	0	13	2	2	1	0	3	3	0	65	117
<b>TOTAL FINAL &amp; DRAFT APPROVED LOTS</b>	<b>37</b>	<b>0</b>	<b>0</b>	<b>48</b>	<b>12</b>	<b>7</b>	<b>8</b>	<b>6</b>	<b>15</b>	<b>0</b>	<b>13</b>	<b>2</b>	<b>2</b>	<b>1</b>	<b>10</b>	<b>3</b>	<b>3</b>	<b>0</b>	<b>167</b>	<b>984</b>
<b>APPLICATIONS (Review &amp; Preparation of Documents)</b>																				
Official Plans	0	0	0	0	0	0	0	0	0	0	0	0	0	0	0	0	0	0	0	0
OPAs	0	1	0	0	0	0	0	0	0	0	0	0	0	0	0	0	1	0	2	1
Comprehensive Zoning By-laws	0	0	0	0	0	0	1	0	0	0	0	1	0	0	0	1	0	0	3	1
Zoning By-law Amend.	0	3	0	4	0	1	2	1	0	0	0	1	0	4	4	1	0	0	21	42
New Severance Apps (Cty)	0	0	4	7	0	4	11	6	14	1	22	2	9	8	18	6	0	0	112	200
Severance Rpts to Mun.	0	0	0	0	0	0	0	0	0	0	0	0	0	0	2	0	2	0	4	24
Minor Variance Rpts to Mun.	0	0	1	0	0	1	0	0	0	0	0	0	0	0	3	0	0	0	5	12
Plan of Subdivision Apps.	0	0	0	0	0	0	0	0	0	0	0	0	0	0	0	0	0	0	0	4
No. of Subdivision Units	0	0	0	0	0	0	0	0	0	0	0	0	0	0	0	0	0	0	0	533
Site Plans/Agreements	0	0	0	0	0	0	0	0	0	0	0	0	0	1	15	0	0	0	16	2
OLT Hearings	1	0	0	0	0	0	0	0	1	0	0	0	0	0	0	0	0	0	2	0
<b>PRELIMINARY REVIEW</b>																				
Planning Checklists	0	0	3	2	0	16	11	9	9	3	4	7	1	15	11	11	0	0	102	254
Other Inquiries	1	2	2	5	0	17	12	7	6	6	11	5	5	19	19	8	10	0	135	229
<b>TOTAL ACTIVITY</b>	<b>8</b>	<b>6</b>	<b>10</b>	<b>28</b>	<b>3</b>	<b>46</b>	<b>45</b>	<b>29</b>	<b>45</b>	<b>10</b>	<b>50</b>	<b>18</b>	<b>18</b>	<b>49</b>	<b>73</b>	<b>30</b>	<b>16</b>	<b>0</b>	<b>484</b>	
<b>2021 YEAR END ACTIVITY</b>	<b>21</b>	<b>6</b>	<b>15</b>	<b>71</b>	<b>3</b>	<b>90</b>	<b>84</b>	<b>36</b>	<b>80</b>	<b>21</b>	<b>77</b>	<b>43</b>	<b>38</b>	<b>104</b>	<b>143</b>	<b>51</b>	<b>38</b>	<b>1</b>		<b>922</b>

112 severances received January-May 2022 versus 84 severances received January-May 2021

62 severance decisions January-April 2022 versus 51 severance decisions January-May 2021